

MindManager®

FOR WINDOWS

PRODUCT OVERVIEW



An ally for every plan, project, and process

Somewhere in all the information bombarding your mind is the actual knowledge you need to organize your day, run your projects, manage your team, grow your business, and be successful.

MindManager complements your workday to synthesize that information, boost your productivity, empower your plans & projects, and collaborate & communicate more effectively.



PROJECT PLANNING



TASK & WORK MANAGEMENT



INFORMATION MANAGEMENT



CORPORATE DEVELOPMENT



BRAINSTORMING & IDEATION

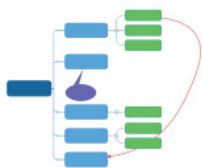


PROCESS MAPPING

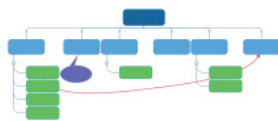
Visualize your path to success

Visual communications are powerful communications. With MindManager, you can quickly create beautiful visualizations that bring structure and clarity to concepts, strategies, plans and projects that empower teamwork and inspire action.

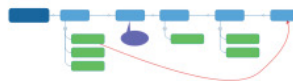
MindManager supports freeform thinking, fluid organization and holistic understanding. Our robust and reliable feature set, powerful integrations and advanced capabilities have set the standard in visual work management software for over 20 years.



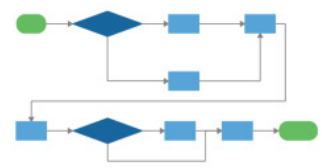
MIND MAPS



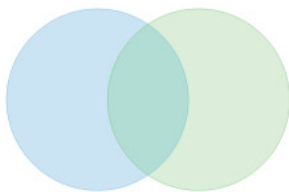
ORG CHARTS



TIMELINES



PROCESS FLOWS



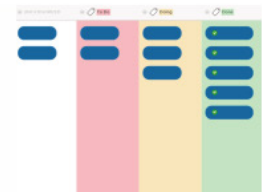
VENN DIAGRAMS



ONION DIAGRAMS



MATRIX DIAGRAMS



KANBAN BOARDS

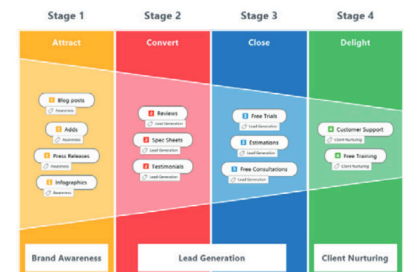
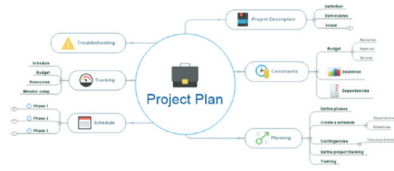
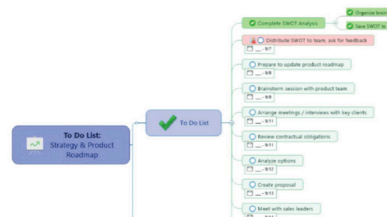
+ TEMPLATES FOR: PERSONAL PRODUCTIVITY | RISK ASSESSMENT | STRATEGIC PLANNING | PROJECT CHARTERS | & MANY MORE



Put your plans, projects, and processes in motion

- Jump-start thinking and inspire action with built-in templates, designs, icons & images
- Drive clarity and consensus with industry-standard objects & smart shapes
- Take your projects to the fast lane by adding tags and resources with text accelerators
- See your projects from every perspective with Gantt, Schedule, Icon & Tag views
- Automate the processes that drive your work forward with SmartRules™
- Collaborate in real time with Co-Editingⁱ and MindManager for Microsoft Teamsⁱ
- Share content with anyone, anywhere with online exporting & publishing
- Showcase your work with newly redesigned capabilities for slides & presentations
- Access & impact maps with MindManager Go and MindManager Snap for mobile
- Get more from the tools you rely on with native Microsoft Office & Project integrations
- Develop custom add-ins and integrate with external data sources via the MindManager API

ⁱCo-Editing is a subscription-based product included with our subscription service, and available as an add-on purchase for customers with an active Upgrade Protection Plan (UPP) or MSA. MindManager for Microsoft Teams is a subscription-based product included with our subscription service, and optionally available as its own standalone offering. Please visit the MindManager online store, or contact our sales department or your preferred reseller for pricing. Free 30-day trials of both Co-Editing and MindManager for Microsoft Teams are included with MindManager 21.



Empower plans & projects

Start a diagram from a blank slate or a library of built-in templates.

Evolve a brainstorm into an executable strategy, process, or plan in the same application.

Capture images, links, and notes anytime, anywhere with NEW MindManager Snap.

Synthesize information

Easily add, remove, and reprioritize topics and see where to focus time and effort.

Enrich tasks with resource information, deadlines, notes, and other metadata.

Keep all your diagrams close-at-hand with NEW MindManager Go for mobile.

Collaborate & communicate

Show your diagrams to customers and co-workers to share knowledge and plans.

Run effective meetings by following sequential talking points in a mind map.

Publish your maps to the web for viewing by others.

Technical Requirements: MindManager Windows 21

Supported Operating System:

- Microsoft Windows 10 (32-bit and 64-bit)

System Requirements:

- Intel or AMD processor (1 GHz or greater)
- 2GB RAM or greater
- 1 GB available disk space
- Recommended Minimum Display: 1280 x 720 pixels
- Microsoft .NET 4.6 or higher

Additional requirements to use certain features:

- Microsoft Office Professional 2016 or later (32-bit and 64-bit)
- Microsoft Project 2016 or later (32-bit and 64-bit)
- Microsoft Internet Explorer 11.0 or greater
- Broadband internet connection

"We use MindManager for large scale projects to create a "40,000 foot" view to easily see what's going on. From there we can navigate to a subproject to discuss or get a visual of what needs to happen."

– Jason Everett, OCI Beaumont

Try MindManager free for 30 days. Visit www.mindmanager.com